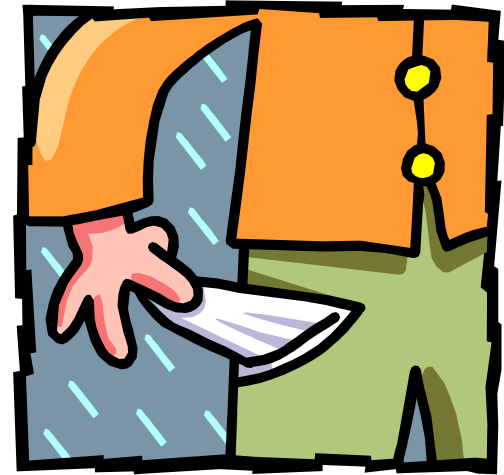


# Best of Times, Worst of Times: Library Service in a Recession



**READS** Roundtables 2010  
REFERENCE AND ADULT SERVICES SECTION

READS  
Pam Gjetum  
6 South St.  
Exeter, NH 03833



How do libraries handle budget cuts when demand for library services is increasing? As people lose jobs and have to cut corners some may find themselves at their local public libraries for the first time. Computer usage, circulation and traffic in the library increases while your staff and hours remain the same or may even have been cut. How can we continue to serve our regular patrons as well as the new comers on less money? Please join us at one of the three roundtables being offered to discuss these issues.

Roundtables are held at unique sites but with similar moderated discussions. They are informal meetings where ideas are exchanged on the topic at hand. Please bring ideas for sharing, URLs, business names, and any other information you would like to share with the group. Notes from each roundtable will be shared via the NHAIS mailing list.

### *Registration Information*

*(Please check one; check website for parking or directions.)*

**Rogers Memorial Library, Hudson-Monday March 29,  
10:00-12:00** <http://www.rodgerslibrary.org>

**Tracy Memorial Library, New London-Wednesday  
March 31, 10:00-12:00** <http://www.tracylibrary.org>

**Moultonborough Public Library, Friday April 2, 10:00-  
12:00** <http://www.moultonborough.org/library>

**\$5.00 for a READS member**

**\$10.00 for a non-member**

**Make checks payable to “READS”**

**Light refreshments will be served.**

Heather Armitage

Portsmouth Public Library

175 Parrott Avenue

Portsmouth, NH 03801

[hearmitage@cityofportsmouth.com](mailto:hearmitage@cityofportsmouth.com)

van stop Portsmouth.

**Registration Deadline: March 12, 2010**

Name: \_\_\_\_\_

Library: \_\_\_\_\_

Phone: \_\_\_\_\_

E-mail: \_\_\_\_\_